



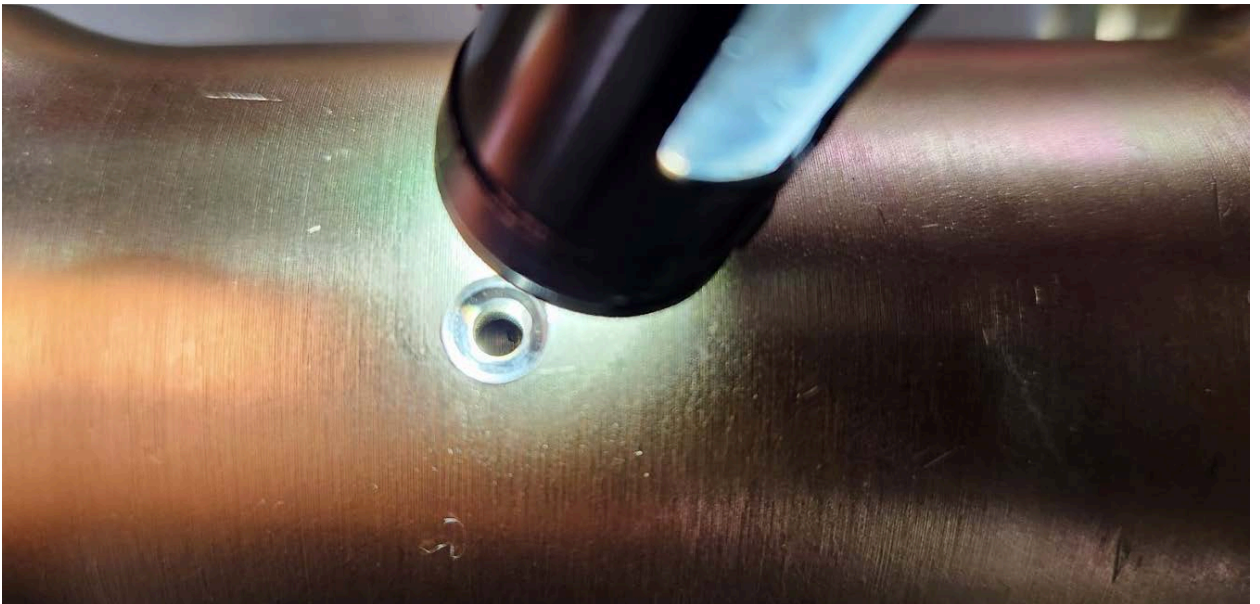
IAG 8.8 Rear Spool Set Screw Installation Instructions



Part Numbers: IAG-DRV-1050, 1052, 1054, 1056

*****Set screws are installed before the rear differential cover can be installed*****

1. Remove axle flange stubs from axles.
2. Line up the gap in the axle flange c-clip with the set screw hole and install the axle flange into the spool until the c-clip groove is aligned with the set screw hole.



3. Install the set screw and securely tighten it.

